

# **The Community Action Network and How Data are Used to Mobilize the Community for Action**

Nathifa Miller, JD

Virginia Visconti, PhD

Vicki Swarr, MSN

Adam Anderson, MURP, MPH

**Culture of Data Conference**

**June 23, 2017**

# Session Learning Objectives

Following participation in the session, individuals will be able to:

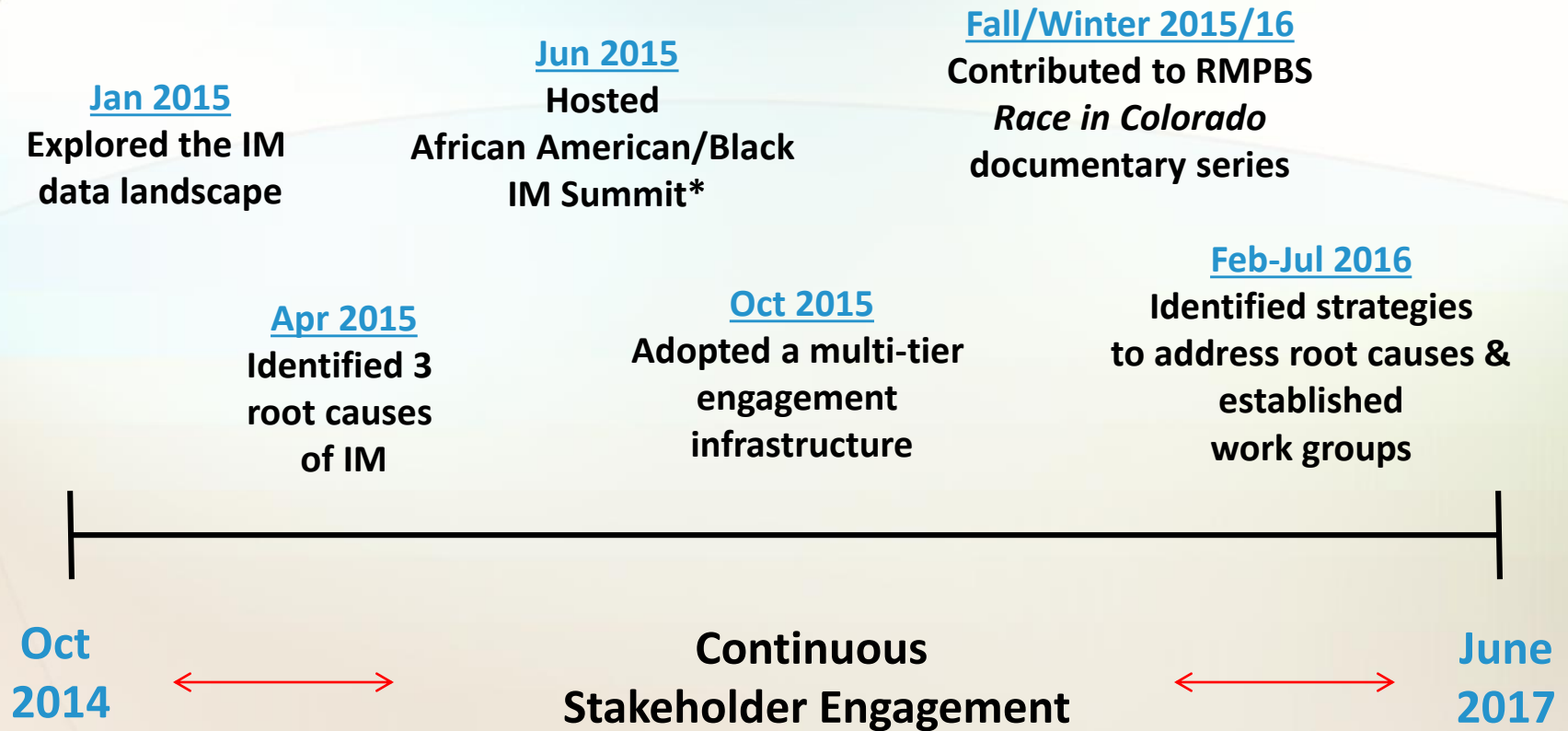
- Explain the collective impact approach to reduce African American/Black infant mortality and how we have created community partnerships.
- Describe how data are used in the Community Action Network, and, how it has moved the community to action.

# Infant Mortality

- **African American infants** are **3-4 times** more likely to die in the first year- **>11%** in 2015.
- **African American mothers** are also **3 times** more likely to experience preterm delivery - **>10.9%** PTB rate in 2015. **This is 28% higher than the rate for all other women.**



# Partnership Chronology



\* See <https://www.publichealthpractice.org/civicrm/event/info?id=133>.

# Collective Impact

*The commitment of a group of cross-sector actors to a common agenda for solving a targeted social problem through alignment and differentiation of efforts*

## Principles:

- Design and implement the initiative with a priority placed on **equity**
- Include **community members** in the collaborative
- Recruit and **co-create** with cross-sector partners
- Use **data** to continuously learn, adapt, and improve
- Cultivate **leaders** with unique system leadership skills
- Focus on program and system **strategies**
- Build a culture that fosters **relationships**, **trust**, and **respect** across participants
- Customize for **local** context

Source: <http://collectiveimpactforum.org/resources>.

# Healthy Babies Strong Families (HBSF)

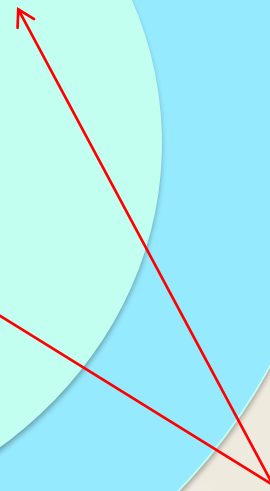
**Community  
Action Network  
(CAN) operates  
at this level.**



**Community-Level Action on the  
Social Determinants of Health & Equity**

**Group-Level  
Programming**

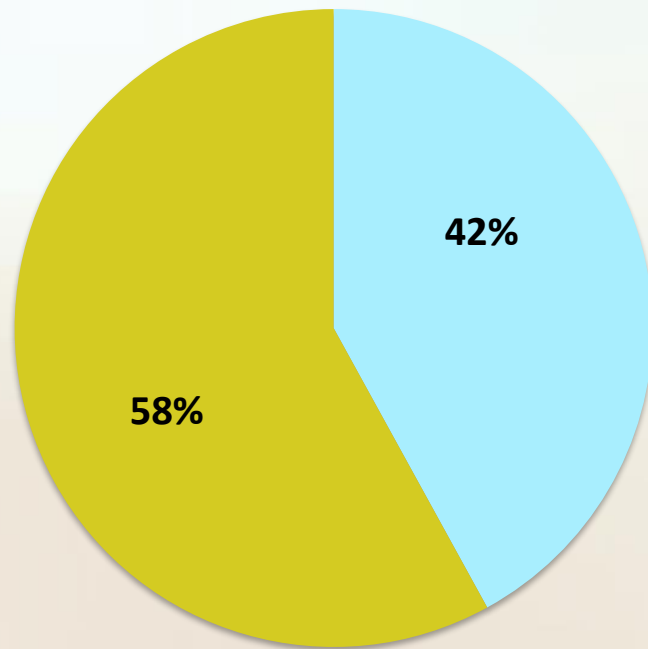
**Individual-Level  
Direct Services**



**HBSF  
Advocates  
work at these  
levels.**

# Community Action Network (CAN)

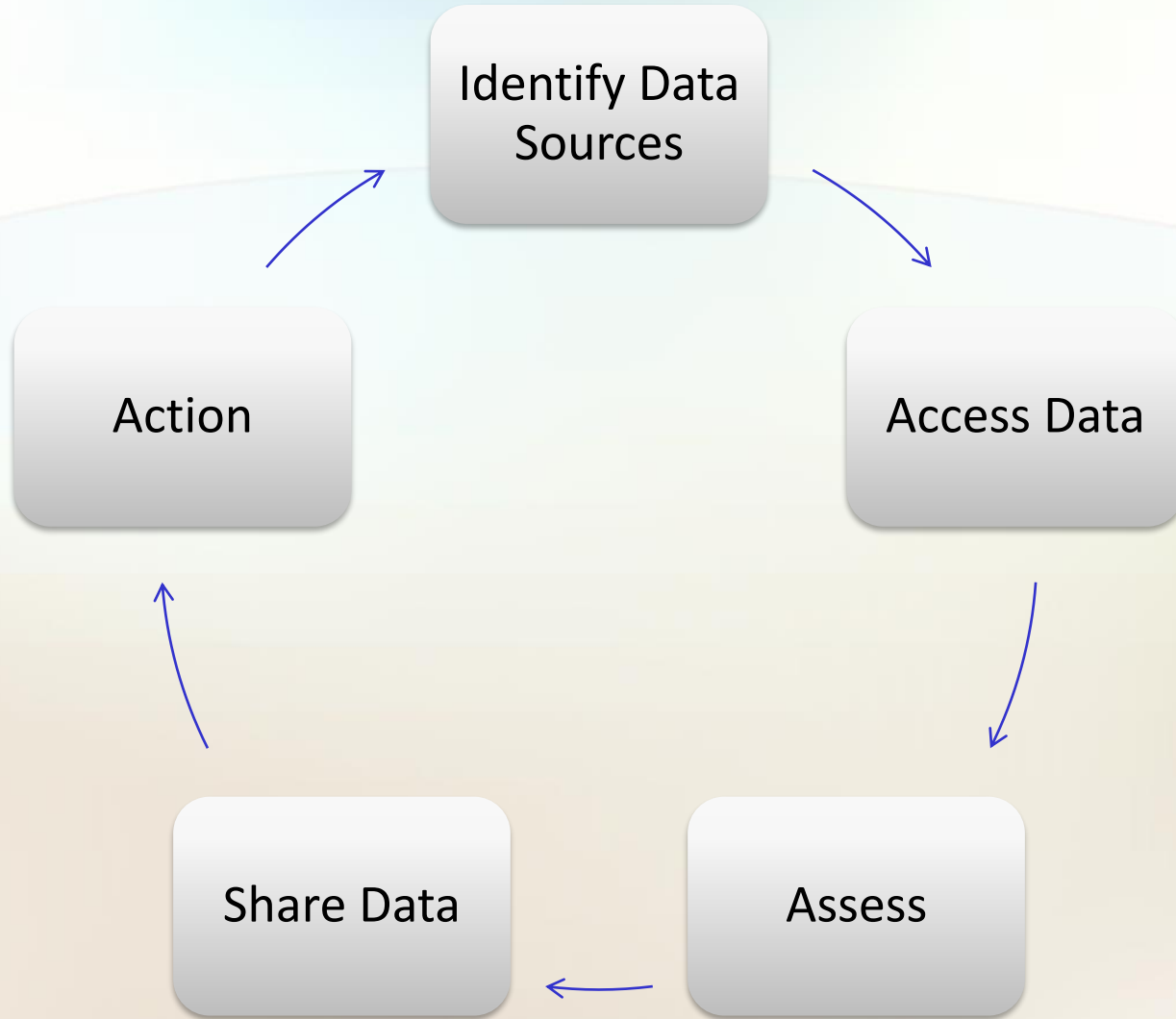
*A strength-based, action-oriented collaborative representative of multiple forms of expertise and lived experience*



■ Community-based organizations and academic public health partners

■ Program participants, community members, public health practitioners, clinicians, local government, media, and business representatives

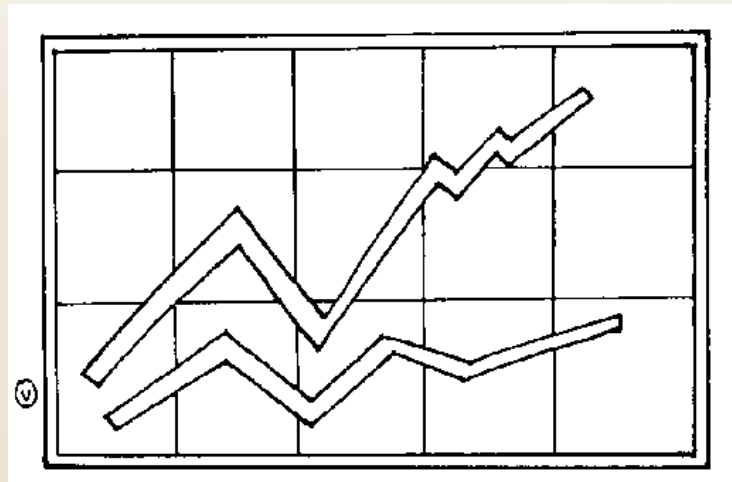
# Data Pathway





## Data Definitions (continued)

- **Infant mortality rate**—Number of infant deaths/number of live births x 100,000
- **Fetal-infant mortality rate**—(Number of fetal deaths + infant deaths)/ (number of fetal deaths + live births) x 100,000



# Available Data

- PPOR –Perinatal Periods of Risk
- Data Mapping

## Perinatal Periods of Risk (PPOR)

### Mortality Based on Weight/Age

Fetal and Infant Deaths of Extremely/ Very Low Birth Weight

Fetal Deaths of Low/Normal Birth Weight

Neonatal Deaths of Low/Normal Birth Weight

Postneonatal Deaths of Low/ Normal Birth Weight

### Categories

Maternal health/  
prematurity

Maternal care

Newborn Care

Infant Care

### Ways to Address Mortality

Preconception health  
Health behaviors  
Perinatal care

Prenatal care  
High risk referral  
Obstetric care

Perinatal management  
Neonatal care  
Pediatric surgery

Sleep position  
Breast feeding  
Injury prevention

### Birth Weight Categories

**Extremely Low Birth Weight**  
(Less than 500 grams)

**Very Low Birth Weight**  
(500-1499 grams)

**Low Birth Weight**  
(1500 - 2499 grams)

**Normal Birth Weight**  
(2500+ grams)

### Infant Deaths Categories

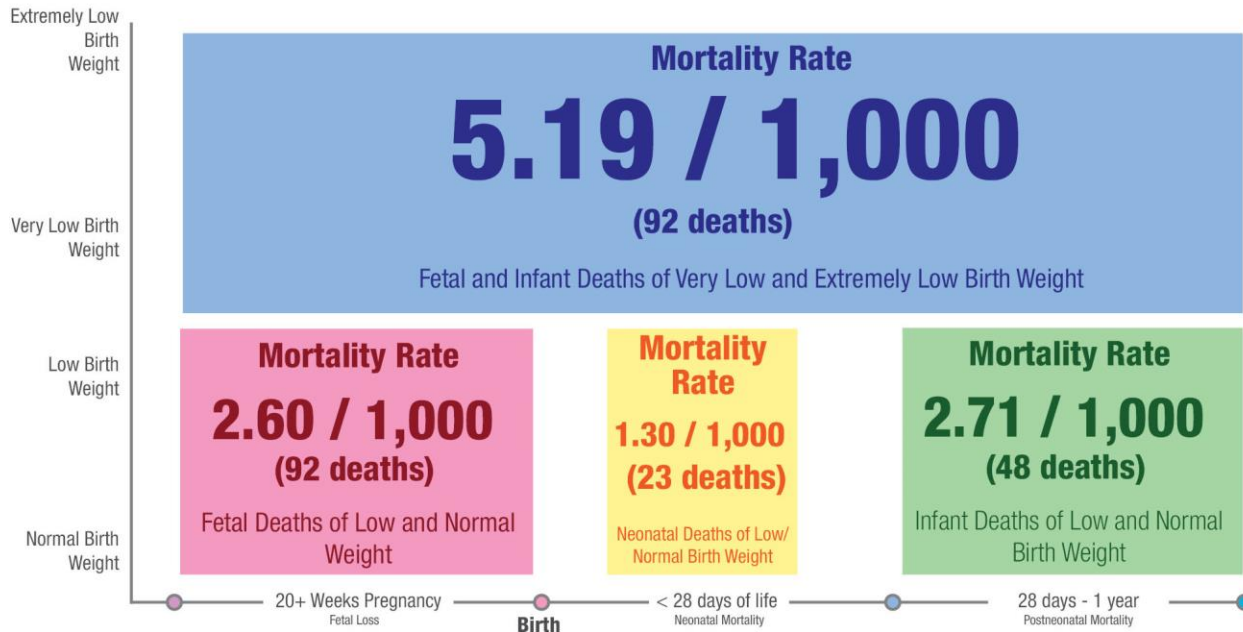
(age at death)

**Fetal**  
(unborn but > 20 weeks gestation)

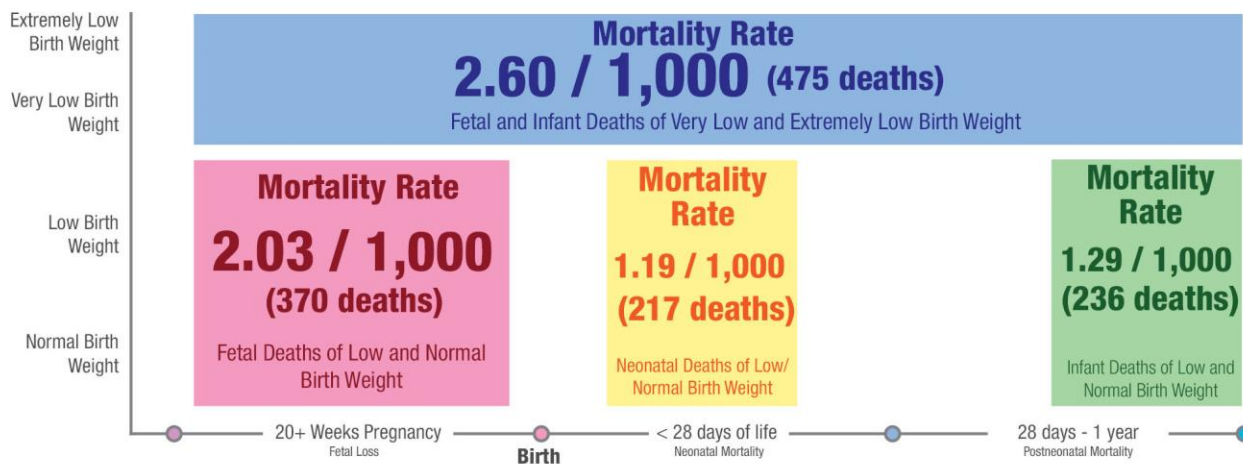
**Neonatal**  
(up to 28 days of life)

**Postneonatal**  
(28 days to 1 year of life)

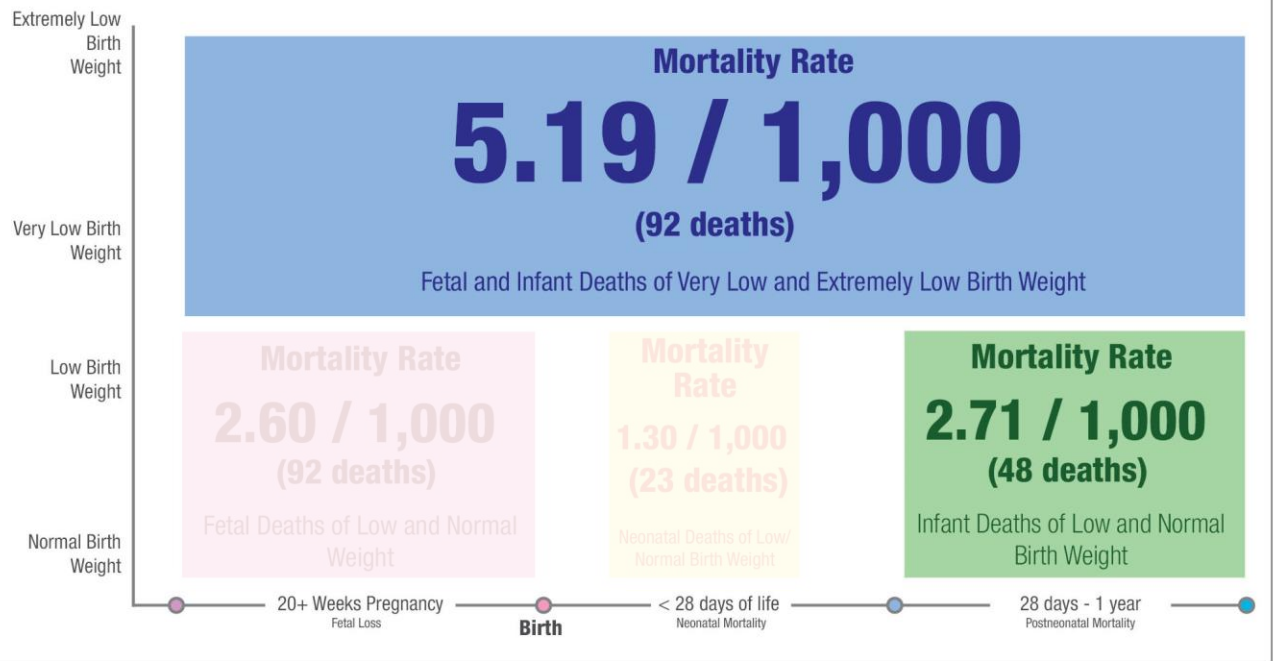
## Fetal and Infant Mortality (PPOR) for Black (Non-Hispanic)



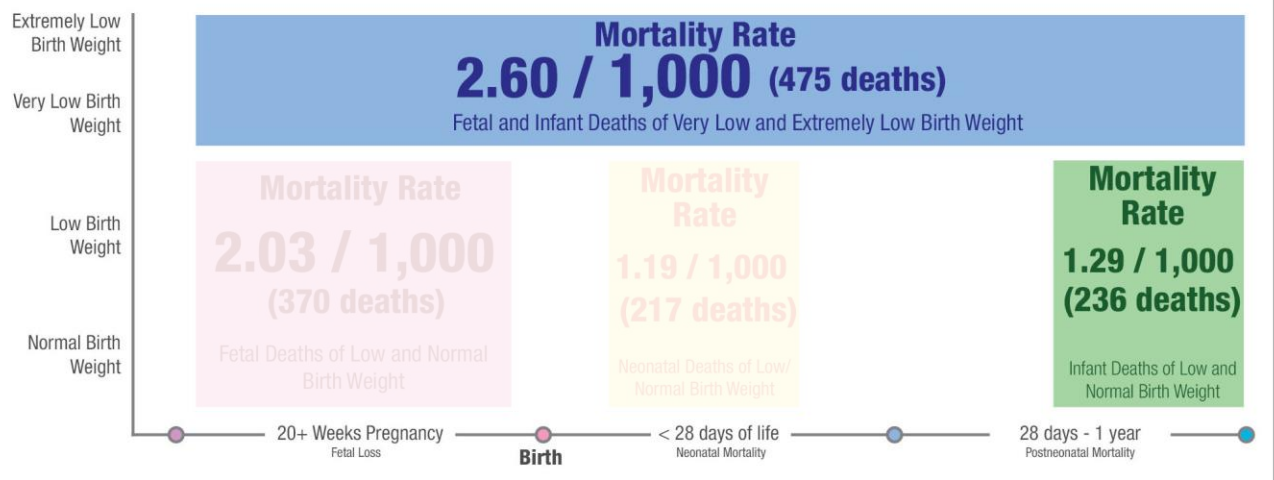
## Fetal and Infant Mortality (PPOR) for Non-Black



### Fetal and Infant Mortality (PPOR) for Black (Non-Hispanic)

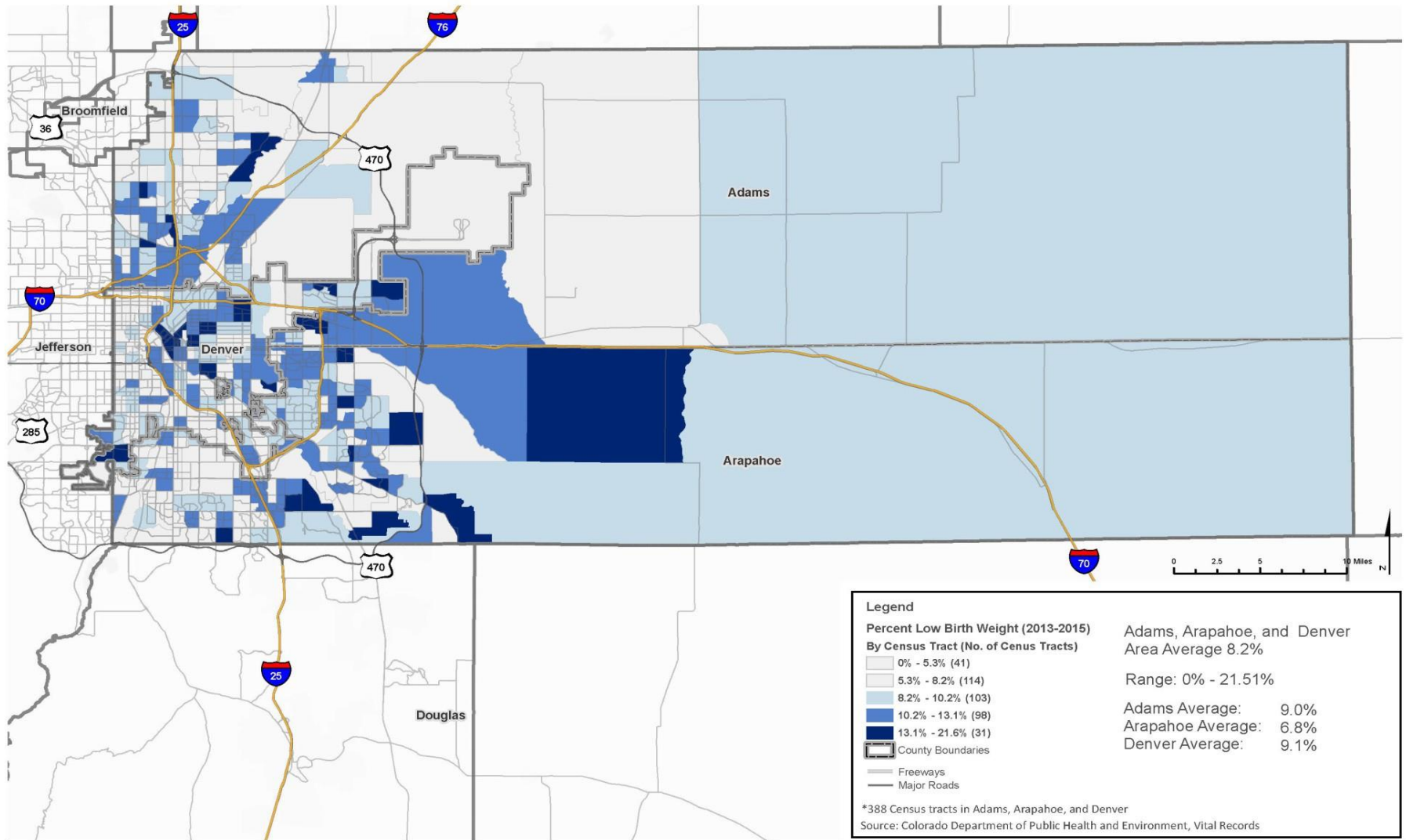


### Fetal and Infant Mortality (PPOR) for Non-Black



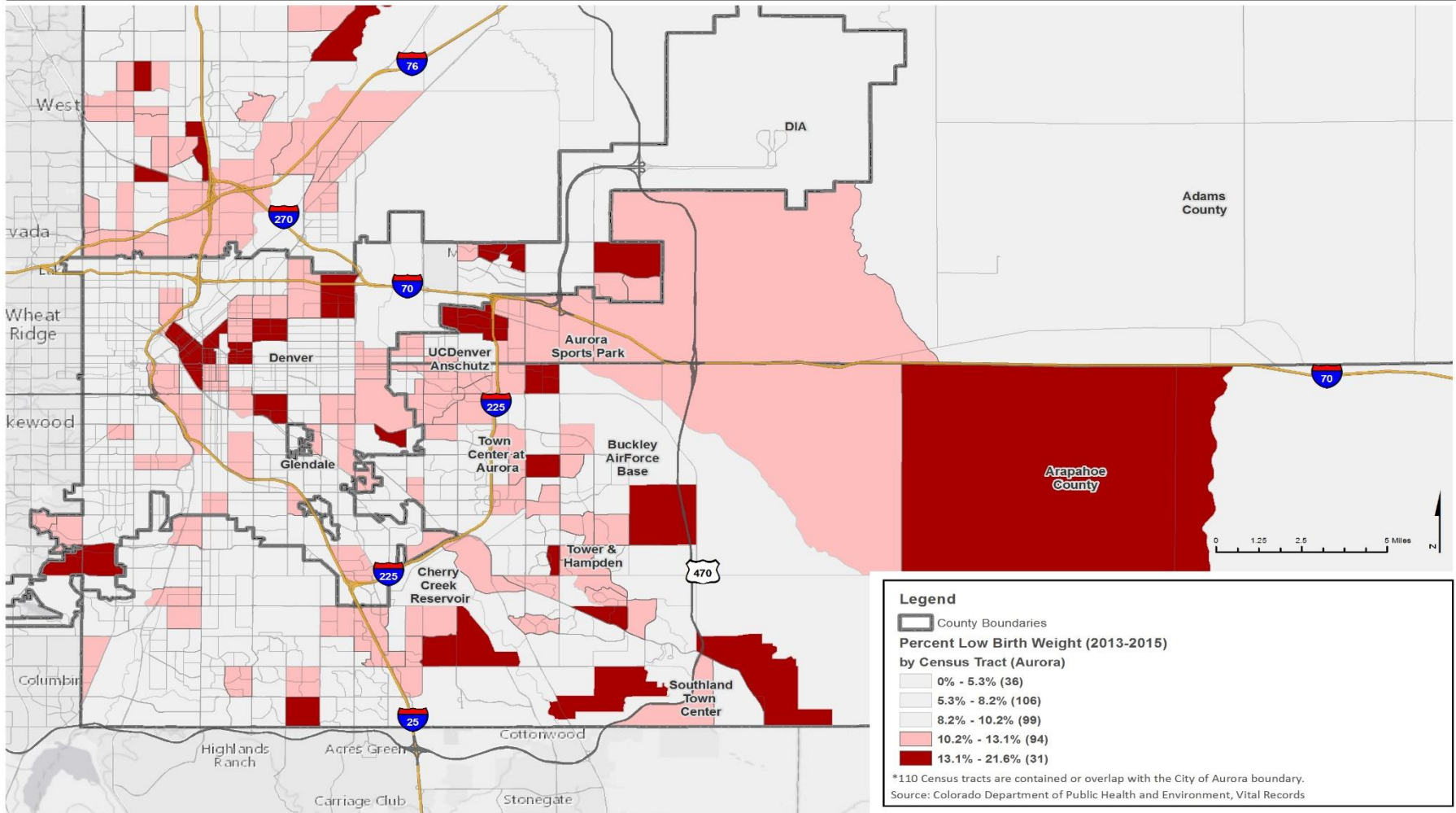
Source: Vital Statistics Program, Colorado Department of Public Health and Environment

## Percent of Singleton Births that are Low Birth Weight (<2500 grams) (2013-2015): Adams, Arapahoe, and Denver Counties, Colorado





## Census Tracts with the Highest Percent of Low Birth Weight <2500 grams) (2013-2015) of Singleton Births: Metro Denver Area, Colorado



Census Tract Boundary Data: US Census 2010  
Date: November, 2016

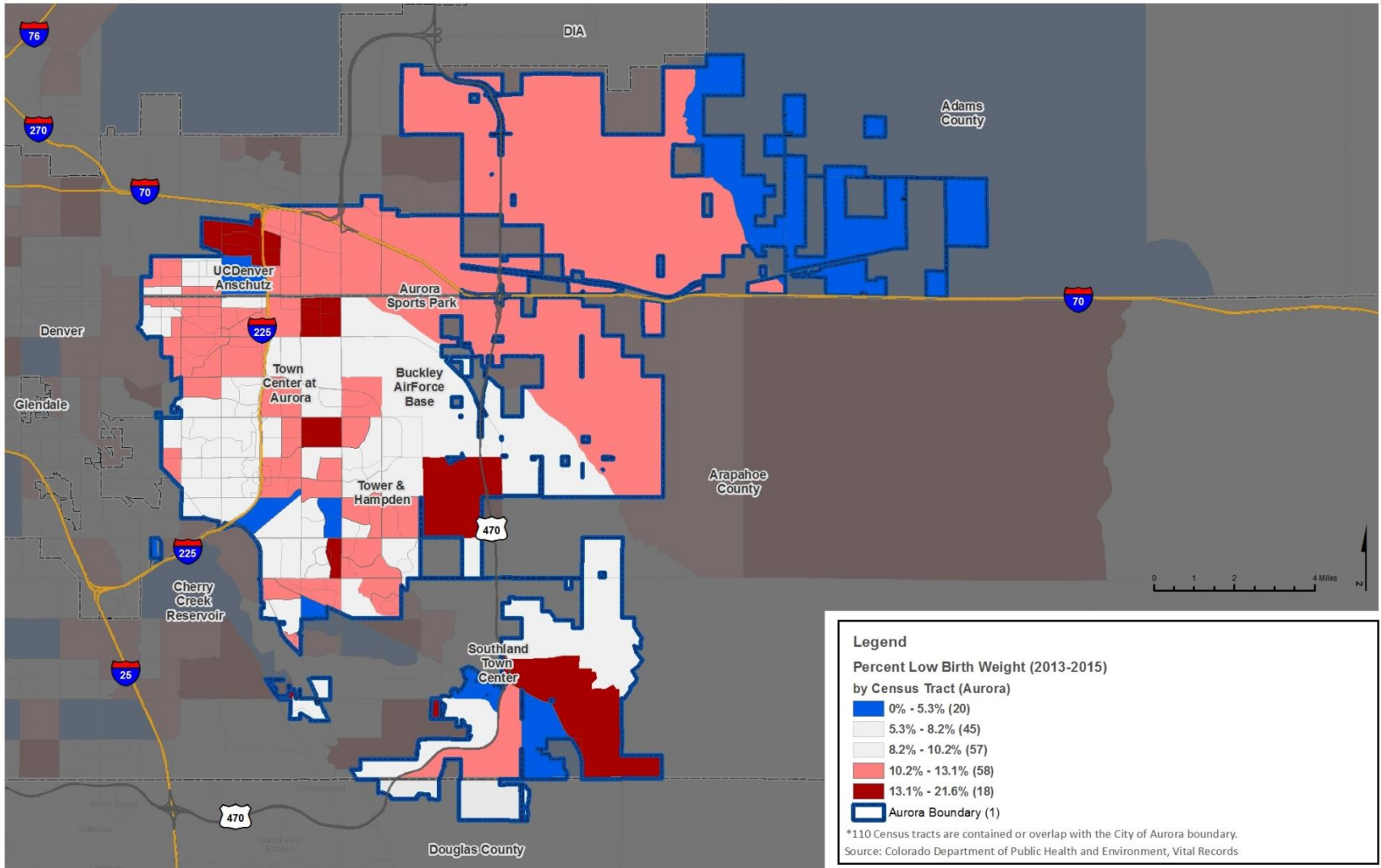
Created by Tri-County Health Department | Epidemiology, Planning, and Communications Division



Douglas County

# DATA REVIEW

## Census Tracts with the Highest Percent of Low Birth Weight <2500 grams> (2013-2015) of Singleton Births: Aurora, Colorado



Census Tract Boundary Data: US Census 2010  
Date: November, 2016

Created by Tri-County Health Department | Epidemiology, Planning, and Communications Division

# DATA REVIEW

## Summary Findings from PPOR Analysis from Denver Public Health and Tri-County Health Department

Majority of black infant mortality disparity falls under the **Maternal Health/Prematurity** and **Infant Care** categories. **Maternal Health/Prematurity** is due to a higher proportion of very low birth weight births.<sup>2</sup>

### Mortality Based on Weight/Age

### Categories

Fetal and Infant Deaths of Extremely/Very Low Birth Weight

**Maternal Health/  
Prematurity**

Fetal Deaths of Low/Normal Birth Weight

**Maternal Care**

Neonatal Deaths of Low/Normal Birth Weight

**Newborn Care**

Postneonatal Deaths of Low/Normal Birth Weight

**Infant Care**

### Maternal health/ prematurity

Prevention areas with the highest potential impact for low birth weight reduction include promoting health prior to pregnancy, promoting sufficient weight gain, and getting women into prenatal care earlier.

### Infant Care

Prevention areas with the highest potential impact during the Infant Care period include educations around safe sleep practices, unintentional injury prevention, and disease/infection



# Root Cause Analysis: Themes/Root Causes

- **Racism/Unjust Systems**

- ✧ Structured inequality
- ✧ Micro-aggressions
- ✧ Cultural mistrust

- **Social Isolation**

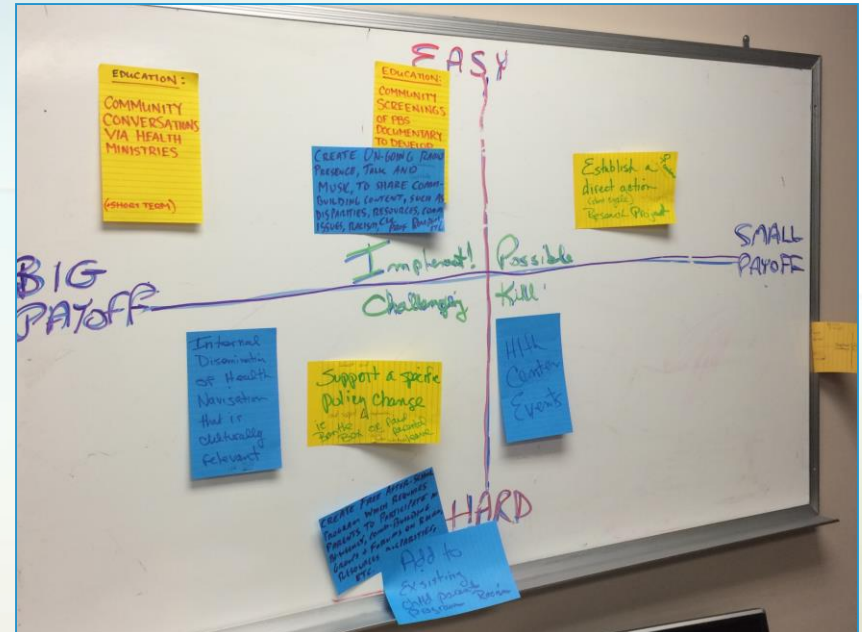
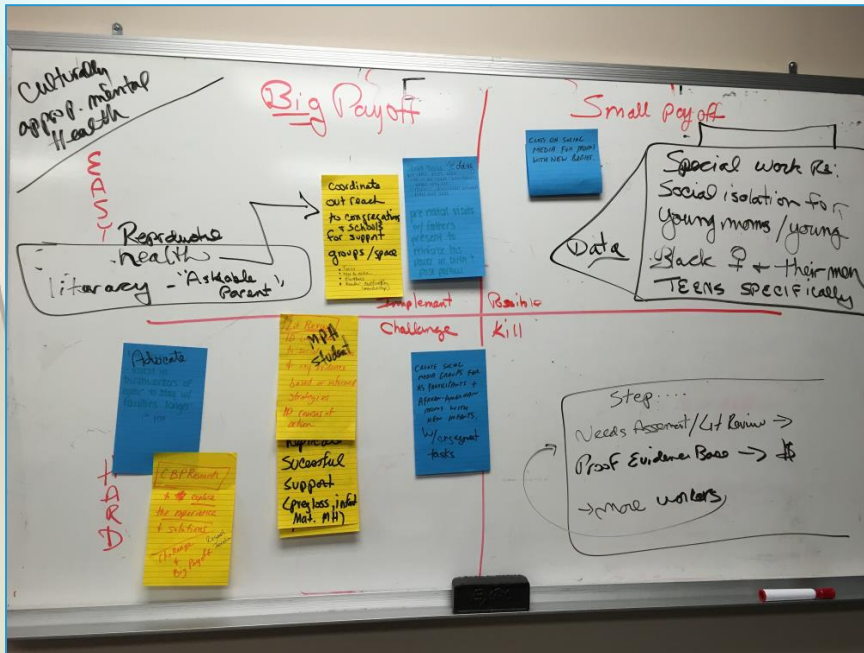
- ✧ No sense of belonging
- ✧ Lack of community/family – including father involvement
- ✧ Lack of leaders, mentors, advocates

- **Healthcare**

- ✧ Access
- ✧ Lack of engagement prior to pregnancy
- ✧ Lack of cultural competence among providers

# Strategy Development: PICK Charts

Racism/Unjust Systems →



← Social Isolation

# Strategies to Address Root Causes

- **Racism/Unjust Systems**

- ✧ Host community screenings of the RMPBS documentary *Precious Loss* and develop a toolkit to foster dialogue and action

- **Social Isolation**

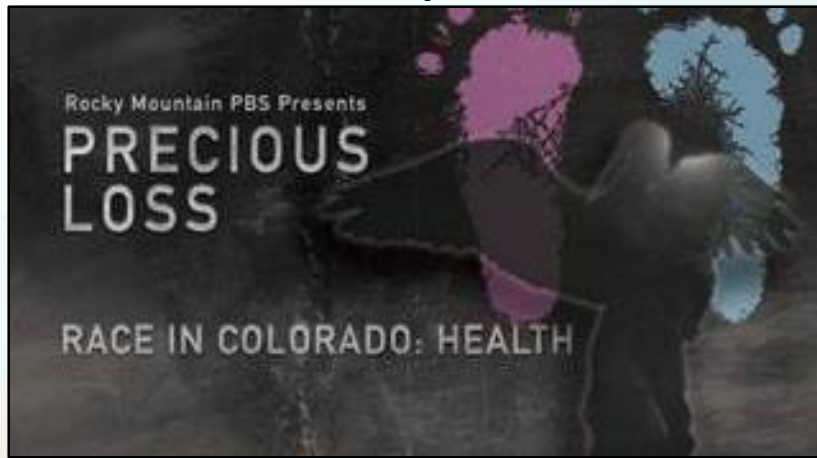
- ✧ Promote prenatal visits with fathers/co-parents present to reinforce their power in the birth and post-partum period

- **Healthcare**

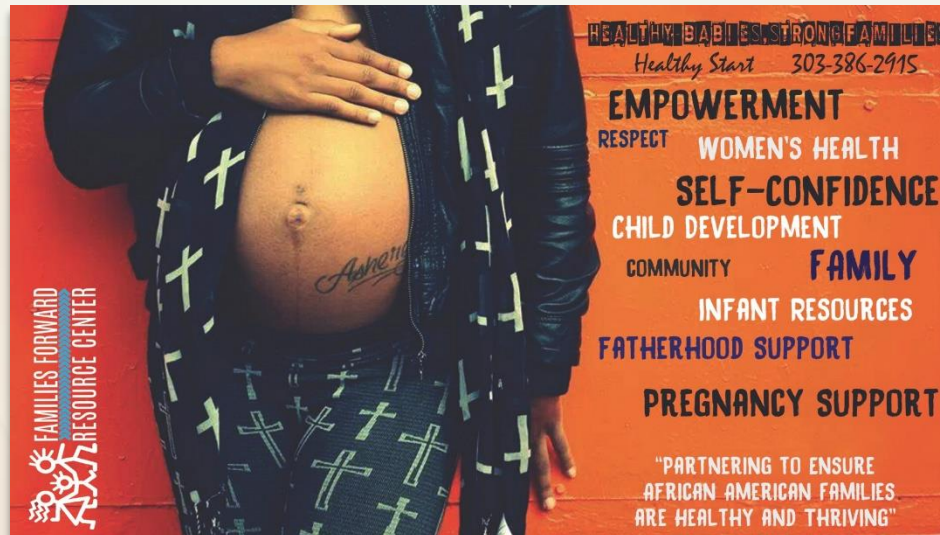
- ✧ Hold discussion groups with medical professionals and moms (get moms together first to identify their main concerns)

# Work Groups to Implement Strategies

## Screenings & Toolkit Development



## Father Involvement/ Co-Parenting Promotion



General Communications  
Development & Coordination  
[www.moreblackbirthdays.org](http://www.moreblackbirthdays.org)

## Screening *Precious Loss*

*“something freeing about telling your story instead of keeping it a secret”*

*“People like to conflate race and poverty, but the film shows that race is what it’s about.”*

*“This really takes a collective effort. I’m excited to hear about that effort. I’m done with studying; we know it.”*

*“Thank you for putting a face on it. That’s what we physicians need.”*



<http://video.rmpbs.org/video/2365670848/>

**Screenings:** 10 thus far

**Venues:**

- Anschutz Medical Campus
- Community Centers
- Libraries
- Schools
- State/Local Public Health Agencies



# Lessons Learned

# Resources

- **March of Dimes:** <http://www.marchofdimes.org/>
- **Colorado Department of Public Health:**  
[https://www.colorado.gov/pacific/sites/default/files/LPH\\_MCH\\_Issue-Brief-2\\_Infant-Mortality.pdf](https://www.colorado.gov/pacific/sites/default/files/LPH_MCH_Issue-Brief-2_Infant-Mortality.pdf) and  
[https://www.colorado.gov/pacific/sites/default/files/PF\\_Prerm-BirthRecs.pdf](https://www.colorado.gov/pacific/sites/default/files/PF_Prerm-BirthRecs.pdf)
- **Zero to Three: Policy and Advocacy**  
<https://www.zerotothree.org.org/policy-and-advocacy>
- **Families Forward Resource Center:**  
<http://www.familiesforwardrc.org/>
- **More Black Birthdays:** <http://www.moreblackbirthdays.org/>
- **Healthier Beginnings Inc:** <http://www.healthierbeginning.org>

# How can you learn more & get involved?

## Contact Information

**Nathifa Miller, JD**, Collective Impact Coordinator  
Healthy Babies Strong Families  
nathifa@familiesforwardrc.org

**Virginia Visconti, PhD**, Community Practice Specialist  
Center for Public Health Practice, Colorado School of Public Health  
virginia.visconti@ucdenver.edu

**Vicki Swarr, MSN**, Perinatal Services Nurse Manager, Program  
Manager, Tri-County Health Department  
vswarr@tchd.org

**Adam Anderson, MURP, MPH**, Population Health Epidemiologist, Tri-  
County Health Department  
aanderson@tchd.org